

Type	SGC(R) 04.1/SGC(R) 05.1 SVC(R) 05.1	SGC(R) 07.1 SVC(R) 07.1/07.5	SGC(R) 10.1
EN ISO 5211	F05/F07	F07	F10
A1	53.5	66.5	82.5
A3	80	80	80
B1	77	95	111
C1	144	155	169
C2	87	99	114
C3	47	47	60
C4	140	150	–
C5	138	153	174
Ø D1	100	125	160
E	125	135	135
E1	90	100	115
F	100	123	152
H1	84.5	101.5	111
H2	194	219	244
H3	165	190	190
H4	144	144	144
H5	4	10	17
H6	20	23	24
H7	81	81	81
Ø d1	90	90	125
Ø d2 f8	35/55	55	70
Ø d3	50/70	70	102
d4	M6/M8	M8	M10
Ø d7	15	15	20
h	3	3	3
h1	12/15	15	14
L max.	40	50	60
z	4	4	4

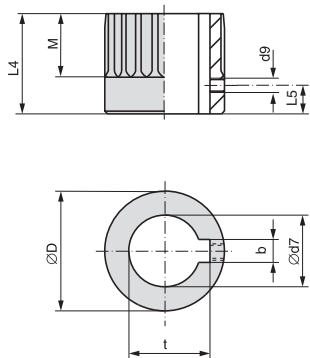
We reserve the right to alter data according to improvements made. Previous documents become invalid with the issue of this document.

SGC(R) 04.1 – SGC(R) 10.1  
SVC(R) 05.1 – SVC(R) 07.5

Dimensions coupling according to

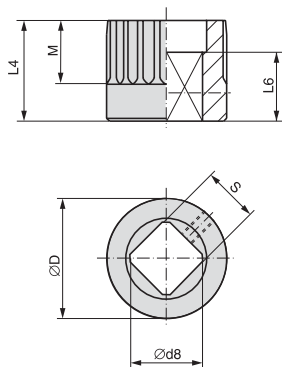
EN ISO 5211  
DIN 6885

Bore acc. to EN ISO 5211  
with keyway acc.  
to DIN 6885-1



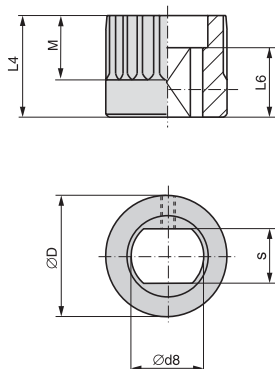
Dimensions	AUMA Part-turn/Globe valve actuators		
	SGC(R)04.1/SGC(R)05.1 SVC(R)05.1	SGC(R)07.1 SVC(R)07.1/SVC(R)07.5	SGC(R)10.1
EN ISO 5211	F05/F07	F07	F10
Ø D	31.75	41.75	51.75
b JS9 <sup>1)</sup>	6		8
Ø d7 H8 <sup>2)</sup>	18	22	28
Ø d7 max.	20	25.4	38
d9 <sup>3)</sup>	M4	M5	M6
L4	35		45
L5 <sup>3)</sup>	8		10
M	20		35
t <sup>1)</sup>	20.8	24.8	31.3

Square bore acc. to EN ISO 5211



Ø D	31.75	41.75	51.75
Ø d8 min. <sup>2)</sup>	18.1	22.2	28.2
Ø d8 max.	22.2	28.2	40.2 <sup>4)</sup>
L4	35		45
L6 min.	30		30
M	20		35
s H11 <sup>2)</sup>	14	17	22
s H11 max.	17	22	30 <sup>4)</sup>

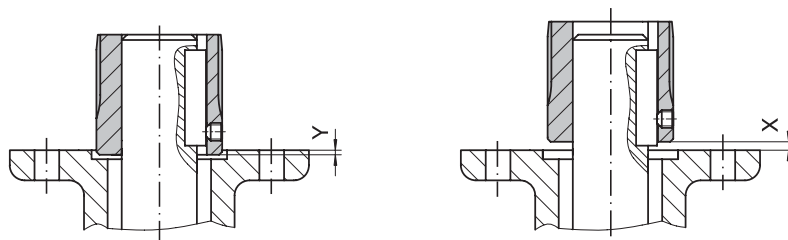
Bore with two-flats acc. to EN ISO 5211



Ø D	31.75	41.75	51.75
Ø d8 min. <sup>2)</sup>	18.1	22.2	28.2
Ø d8 max.	22.2	28.2	36.2
L4	35		45
L min.	25		25
M	20		35
s H11 <sup>2)</sup>	14	17	22
s H11 max.	17	22	27

X max.	2.5	3.5
Y max.	6	10

Mounting position of coupling



<sup>1)</sup>Dimensions depend on Ø d7, refer to DIN 6885-1

<sup>2)</sup>Recommended size according to EN ISO 5211

<sup>3)</sup>Thread and grub screw

<sup>4)</sup>according to DIN 79

We reserve the right to alter data according to improvements made. Previous documents become invalid with the issue of this document.